

MBS-BC02 and MBS-086

1. Product introduction

1) MBS-BC02

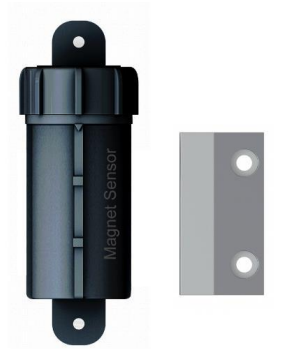
Bluetooth BLE iBeacon Adapter



Item		Parameter
Type		Bluetooth gateway
Interface	RS232	2 channels
	IO High	1channel
	IO Low	1channel
Baud rate		9600
Input voltage		DC: +5~32V
Exterior dimensions		51mm*36mm*15mm



2) MBS-086



Item	Parameter
Type	Door Magnet
Wireless communication	Bluetooth Low Energy (BLE) 5.0
Bluetooth Transmission Range	Up to 100m
Battery	Replaceable CR2 1000mAh
Battery operating life	(Every1000 ms/1s) 5 years
Waterproof	IP69k
Size	90mm*30mm*38mm
Operating temperature	-30℃~+80℃

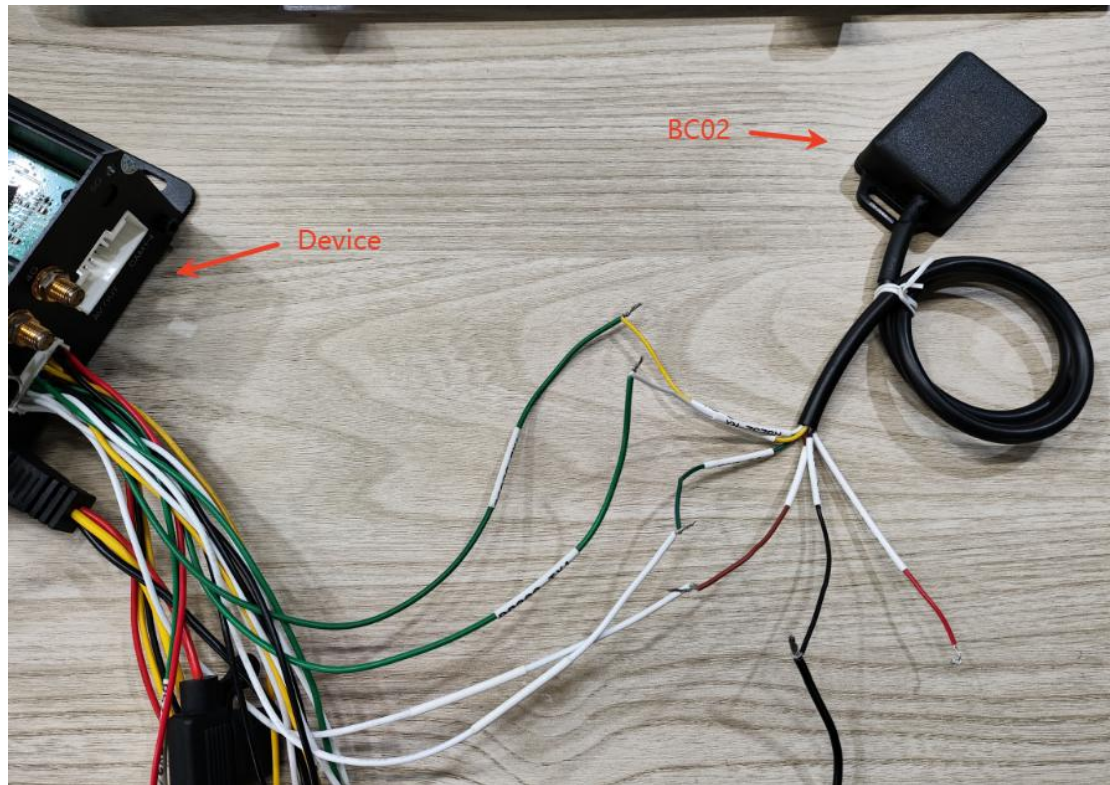
2. Wiring instructions

1) MBS-BC02 power supply wiring

The B+ of MBS-BC02 needs to the positive pole of the 12V power supply, and the GND of MBS-BC02 needs to be connected with the Dashcam & MDVR host and the sensor.

2) MBS-BC02 Wiring to Dashcam & MDVR

The TX of MBS-BC02 is connected to the RX of the host, the RX of MBS-BC02 is connected to the TX of the host, the IO High of MBS-BC02 is connected to the IO IN1 of the host, and the IO Low of MBS-BC02 is connected to the IO IN2 of the host.



3. MBS-BC02 Bluetooth gateway controller and MBS-086 door magnet configuration

1) Download & Install“BLE controller” APP and “n RF connect” APP



BLE controller



n RF connect

2) Open the“BLE controller”,find the Bluetooth broadcast name “S060”and select to enter

COM output period(ms) recommended selection range 1000~10000

COM baud rate is selected as 9600

Keep others as default

Device List		SCANNING
S060B 303780	-53 db	
tcl_RF_t*ap_R315T1-D B8:12:DA:B2:DB:27	-82 db	
KD031-3F4E3A C4:A8:28:3F:4E:3A	-93 db	
086 303969	-39 db	
Printer_1793_BLE DC:0D:30:8A:17:93	-85 db	
Printer_EBB4_BLE DC:0D:30:90:EB:B4	-77 db	
Mijia Scale S400 9CA9 84:46:93:62:9C:A9	-98 db	

←

S060B
303780

⋮

ADD

APPLY

Sensors Update frequency:

Scan Duration(ms):

Scan retries until error:

COM output period(ms):

COM baudrate: ▼

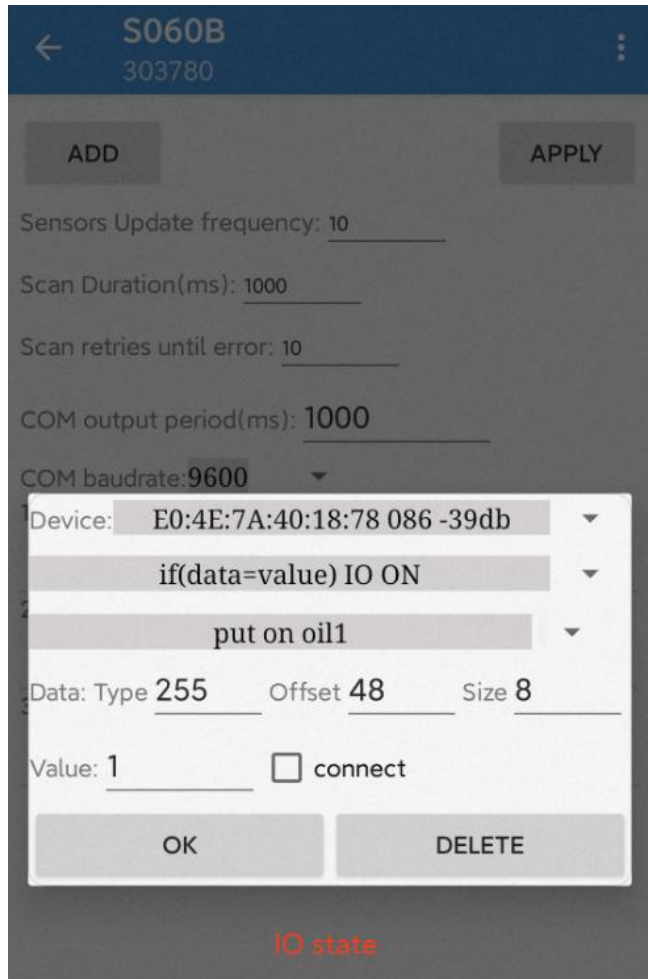
1 E0:4E:7A:40:18:78
type:ff offset:48 size: 8 = 1 io on
type:ff offset:48 size: 8 output on oil1 advertise

2 E0:4E:7A:40:18:78
io off
type:ff offset:56 size: 8 output on oil2 advertise

3 E0:4E:7A:40:18:78
io off
mac output on id advertise

3) Add S060 (MBS-BC02)

Add IO status, power status and MAC address. Please configure according to the picture. After configuration, click OK to save.



← S060B
303780

ADD APPLY

Sensors Update frequency: 10

Scan Duration(ms): 1000

Scan retries until error: 10

COM output period(ms): 1000

COM baudrate: 9600

Device: E0:4E:7A:40:18:78 086 -39db

if(data=value) IO ON

put on oil1

Data: Type 255 Offset 48 Size 8

Value: 1 ☐ connect

OK DELETE

IO state

←

S060B
303780

⋮

ADD

APPLY

Sensors Update frequency: 10

Scan Duration(ms): 1000

Scan retries until error: 10

COM output period(ms): 1000

COM baudrate: 9600

Device: E0:4E:7A:40:18:78 086 -39db

io off

put on oil2

Data: Type 255 Offset 56 Size 8

Value: 0 ☐ connect

OK

DELETE

State of charge

←

S060B
303780

⋮

ADD

APPLY

Sensors Update frequency: 10

Scan Duration(ms): 1000

Scan retries until error: 10

COM output period(ms): 1000

COM baudrate: 9600

Device: E0:4E:7A:40:18:78 086 -39db

io off

put on id

Data: Type 255 Offset 0 Size 0

Value: 0 ☐ connect

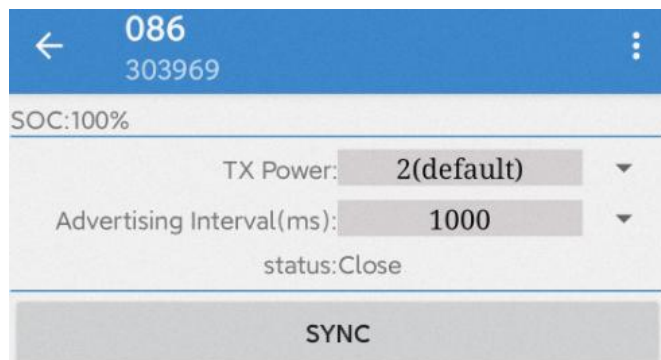
OK

mac address

4) Open the “BLE controller”,fine the Bluetooth broadcast name “086” and select to enter

TX Power is recommended to be selected according to the distance between the door magnet and the Bluetooth gateway.

Advertising Interval is the default value



4. Dashcam&MDVR Host Configuration

After completing the Wiring,power on the host and accessories,connect the phone to the WIFI of the host,and then use the configuration APP(MCTool) to configure the parameters.The specific configuration is as follows:

1) MCTool > Setting > Peripheral > COM1

Function is selected as 808-UT

Type is selected as 232

Baud Rate is selected as 9600

Keep others as default

<

COM1

peripheral

Function	808-UT	>
Type	232	>
Baud Rate	9600	>
Data Bit	8	>
Stop Bit	1	>
Parity	None	>

Save

2) MCTool > Setting > Serial Information

Check whether the Status of COM1 is normal

< Serial Information	
Name	COM1
Function	808-UT
Status	normal
Remarks	

3) MCTool > Setting > IO > IN1

Enable is selected as Custom

Level is selected as High

<

IN 1

Enable	Custom	>
Level	High	>
Delay(s)	3	
Wait(s)	0	
Record	<input type="checkbox"/>	
Preview Mode	Mode 1	>
Record Lock Chn	选择了0项	>
Record Upload Chn	选择了0项	>
Alarm Output	选择了0项	>
Snap Chn	选择了0项	>
Preview Chn	选择了0项	>

Live

Playback

Setting

Calibration

4) MCTool > Setting > IO > IN2

Enable is selected as Custom

Level is selected as High

